



B+LNZ Environment Strategy Refresh

Beef + Lamb New Zealand
Annual General Meeting
22 March 2018

Dave Harrison
GM Policy and Advocacy

A Little Bit of Process....



- Developed a set of aspirational goals
 - Environment Reference Group
 - 'By 2040, we will have.....'
- Tested aspirational goals with farmers
 - Support for the idea, but...
 - Where are we now, and what can we practically do?
- Draft strategy based around four pillars – water, GHGs, biodiversity and soils
- Discussing with stakeholders
- Moving to finalisation and implementation



Environment Strategy

Four Focus Areas



- Four key areas of activity

- Cleaner Water

- 'New Zealanders can gather food and swim in freshwater surrounding our farms'

- Towards Carbon Neutral

- '50% reduction in net emissions (below 1990 levels) by 2050'

- Thriving Biodiversity

- 'Sheep and beef farms provide...habitats that support biodiversity and protect our native species'

- Healthy Soils

- 'Land use is closely matched to soil potential'



Environment Strategy

Our Approach



- Our approach to improvement
 - ‘It starts with the individual farmer’
 - Updated farm environment planning
 - Measuring and developing tools
 - ‘Scaling up for impact’
 - Supporting groups of farmers to work together
 - Supporting farmer advocacy
 - Regional and national planning
 - Telling our story



Cleaner Water

What Next?



- Second Generation FEP
 - Focus on critical source areas, not blanket rules
 - All sheep and beef farms to have an FEP
- Demonstrate link between action and outcome
 - Modelling tools – e.g., LUCI, Mitigator
- Support for Catchment Groups



Cleaner Water

Wharekopae Example



- E-coli from sheep and beef farms affecting 'swimmability'
- 2015: Gisborne District Council and B+LNZ team up
 - Workshops, case studies, research, monitoring
- All 21 sheep and beef farmers in catchment have FEP
 - 4.2km of fencing
 - Alternatives to fencing
- Fewer 'unswimmable' days
- MfE Green Ribbon finalist

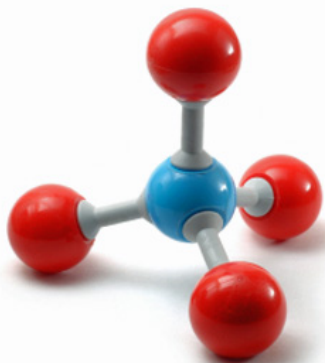


Towards Carbon Neutral

What Next?



- Advocate for recognition of our existing and future potential contribution
 - 19% below 1990 levels already
 - Emissions Trading Scheme policies
 - '1 billion trees' policy
- Overseer files for B+LNZ survey farms
- Develop decision support tool



Thriving Biodiversity

What Next?



- Telling the story of biodiversity on sheep and beef farms
- Improved biodiversity component to FEP
- Working with farmers and others (e.g., DoC) on how to make best use of the resource we have
 - Biodiversity corridors?
 - Collectively managing areas of biodiversity?



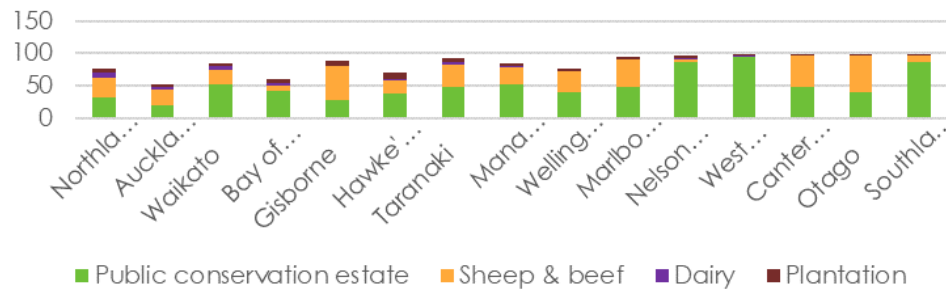
Thriving Biodiversity

Native Vegetation in New Zealand

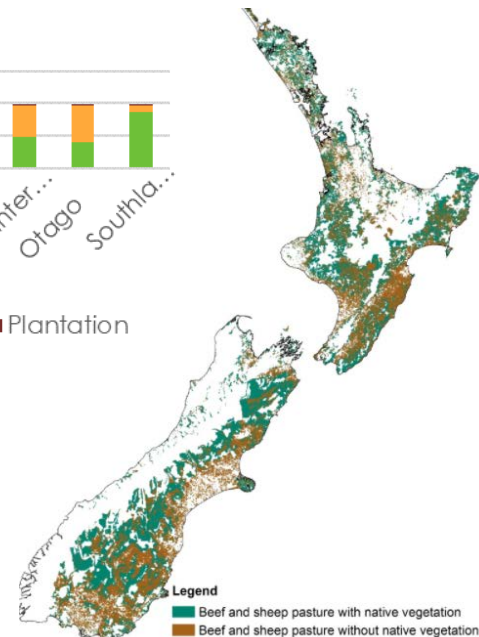
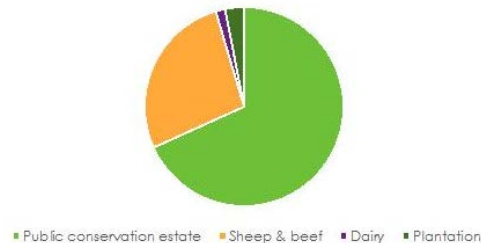


- Native vegetation on sheep and beef farms ~2.7 million ha
- Sheep and beef farms contain 24% of native vegetation in NZ
- 53% of native vegetation in Gisborne region is on S&B farms

Percent of total native vegetation across different land uses by region



Native vegetation across different land uses



Healthy Soils

What Next?



- Better understand our soils and land use capability
- Natural capital approach to land management through FEPs
- Targeted extension to reduce sediment loss from risk activities (e.g., intensive winter grazing)



0800 BEEFLAMB (0800 233 352) | WWW.BEEFLAMBNZ.COM | BY FARMERS. FOR FARMERS