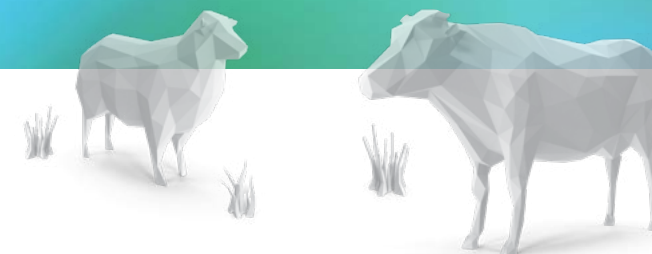




AGINNOVATION CONFERENCE

Tuesday 4 May 2021
Awapuni Function Centre,
67 Racecourse Road,
Palmerston North



Resilience in a changing landscape

Programme

9.15am	Registration and morning tea
10.00am	Welcome
10.10am	Introduction Andrew Morrison, B+LNZ Chair
10.30am	Keynote Speaker Melissa Clark-Reynolds, former B+LNZ Independent Director
11.15am	Pick 'n' mix Session 1
12.00pm	Pick 'n' mix Session 2
12.45pm	B+LNZ Networking Lunch
1.45pm	Pick 'n' mix Session 3
2.30pm	Pick 'n' mix Session 4
3.15pm	Keynote Speaker Gibert Enoka, All Blacks mental skills coach
4.00pm	Networking hour Supported by ASB
5.00pm	Conclusion

Pick 'n' Mix Sessions

ROOM 1 SILKS

11.15am Pick 'n' mix Session 1 (Pick one)

Hyperfarm Project
Dr Seth Laurenson, AgResearch

ROOM 2 MARTON/FEILDING

Sharing our story: how we're building Kiwi pride in the red meat sector
Lee-Ann Marsh, B+LNZ

ROOM 3 TERRACE

Rural Innovation Lab
Mat Hocken, Grassmere Dairy

12.00pm Pick 'n' mix Session 2 (Pick one)

Utilising nature's wonder product, and spreading the goodness of wool
Sophie and Sam Hurley, Honest Wolf

Navigating a changing global environment
Steph Honey, Honey Consulting

Use of Wiltshires to reduce farm costs
Steve Morris, Massey University

12.45pm Beef + Lamb New Zealand Networking Lunch

1.45pm Pick 'n' mix Session 3 (Pick one)

The art of invention - creating a plastic alternative from coarse wool
Logan Williams, NZ Merino

What's your vision for resilient hill country futures, and how do we get there?
Ange McFetridge, B+LNZ

New science and technology to tackle facial eczema
Axel Heiser, AgResearch

2.30pm Pick 'n' mix Session 4 (Pick one)

Creating solutions for farmers in a changing world
Sarah Adams, Gallagher

Knowing your GHG's numbers
Ben Hancock, B+LNZ

Making positive changes at scale with catchment communities
Roger Dalrymple, Rangitikei Rivers Catchment Collective

About the day

With a theme of 'Resilience in a changing landscape', the conference opens with the inspirational Melissa Clark-Reynolds sharing her futurist view on new technologies and societal change. You'll then make your pick from a fresh line-up of concurrent presentations and workshops. The day closes with guest speaker Gilbert Enoka, the All Blacks mental skills coach.

Tickets \$65 per/person

For more information, and to purchase tickets visit www.beeflambnz.com/aginnovation-2021 or scan the QR code.

If you require assistance with registration please contact Georgie Cranswick: georgie.cranswick@beeflambnz.com or 027 344 1724.

