



Beef + Lamb New Zealand Facilitation Hub Webinar

November 30th 2021



0800 BEEFLAMB (0800 233 352) | WWW.BEEFLAMBNZ.COM | BY FARMERS. FOR FARMERS

Today's Agenda



- Introducing the new B+LNZ Facilitator hub platform
- Top up your facilitation toolbox
- An update on B+LNZ Action Groups

Breakout Exercise



- Appoint a facilitator and scribe - use Google slide corresponding to your group number
- Brainstorm (not discuss) successful strategies and record the
- Agree most powerful strategy and **highlight** it
- When we display yours - you have 60 sec to tell us why you highlighted that one

See Pdf Attachment for notes collected from breakout session sent with this PowerPoint.

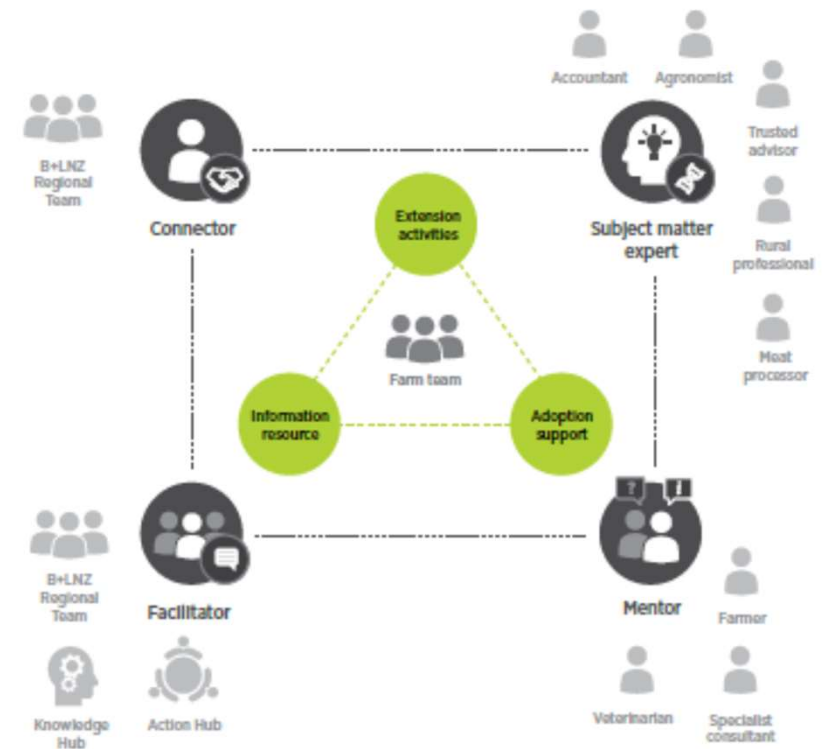


Vision for Action Groups

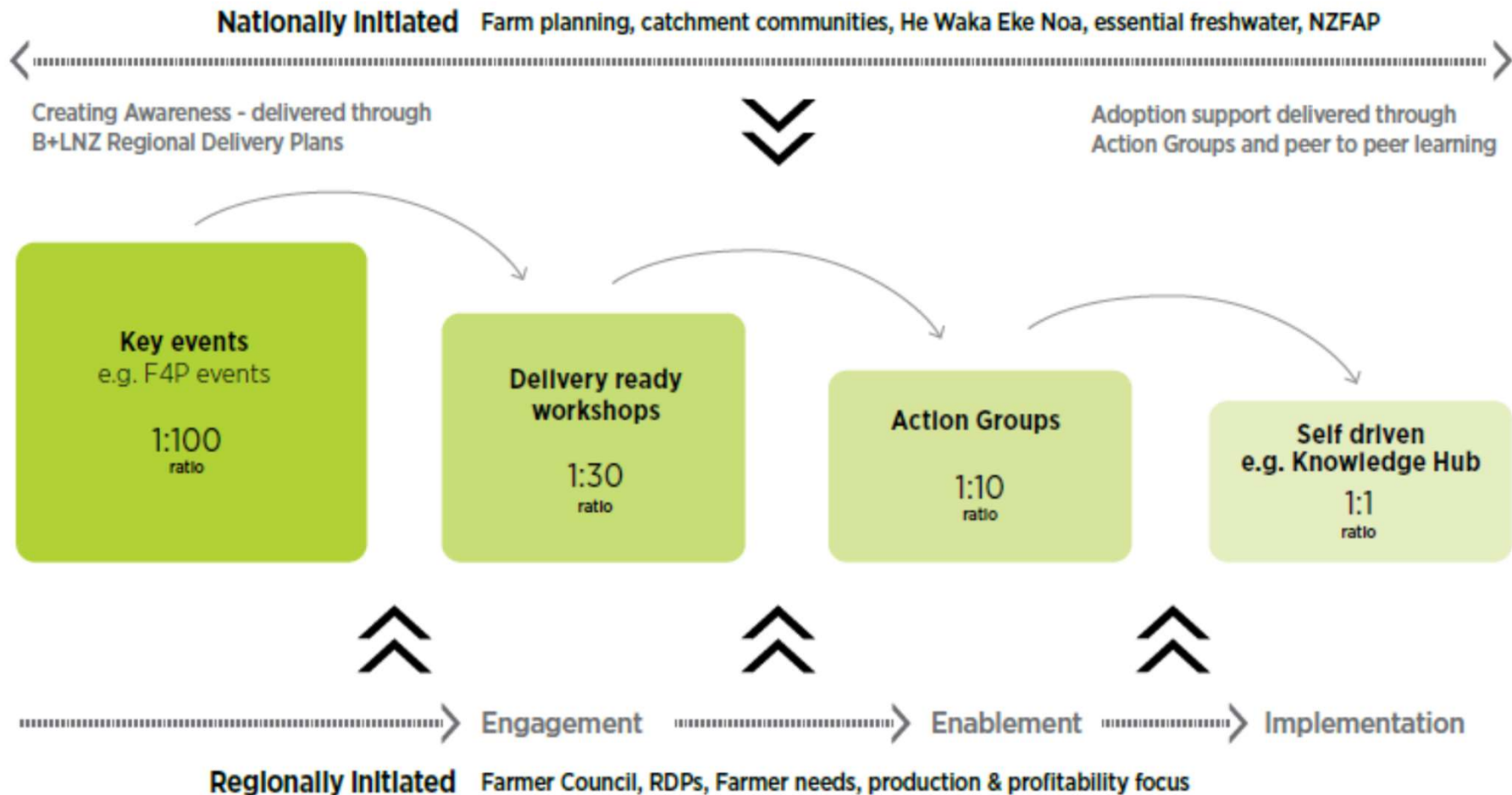


The core fundamentals of the RMPP Action Network Programme are retained to allow farmers to make the successful on farm change with the support of experts

Connected, facilitated, SME's, Mentored



B+LNZ approach to extension delivery



The ongoing support offered by B+LNZ to the Action Network programme



For Action Groups:

Annual regional conference that brings groups together to share ideas/ learnings

Maintenance of up-to-date directory with group focus and contact details

Maintenance of expert and facilitator directory as a resource for regional groups

B+LNZ will have an annual outreach programme to the wider farming community to share case studies through various rural media channels. This will include videos, written stories and podcasts

Quarterly newsletter sharing best practice and farmer case studies

Access to B+LNZ tools and resources including delivery ready workshops, learning modules etc.

B+LNZ's 25 staff based in rural communities and operating with farmers will provide a network that connects facilitators, lead farmers, and groups with others nationwide

The ongoing support offered by B+LNZ to the Action Network programme



For facilitators:

Continuation of hubs through physical meetings or conference calls to share new B+LNZ initiatives and information, compare notes and address common issues

Independent feedback through intelligence gathering via interaction with lead farmers and other group members

Facilitators Online hub & engagement

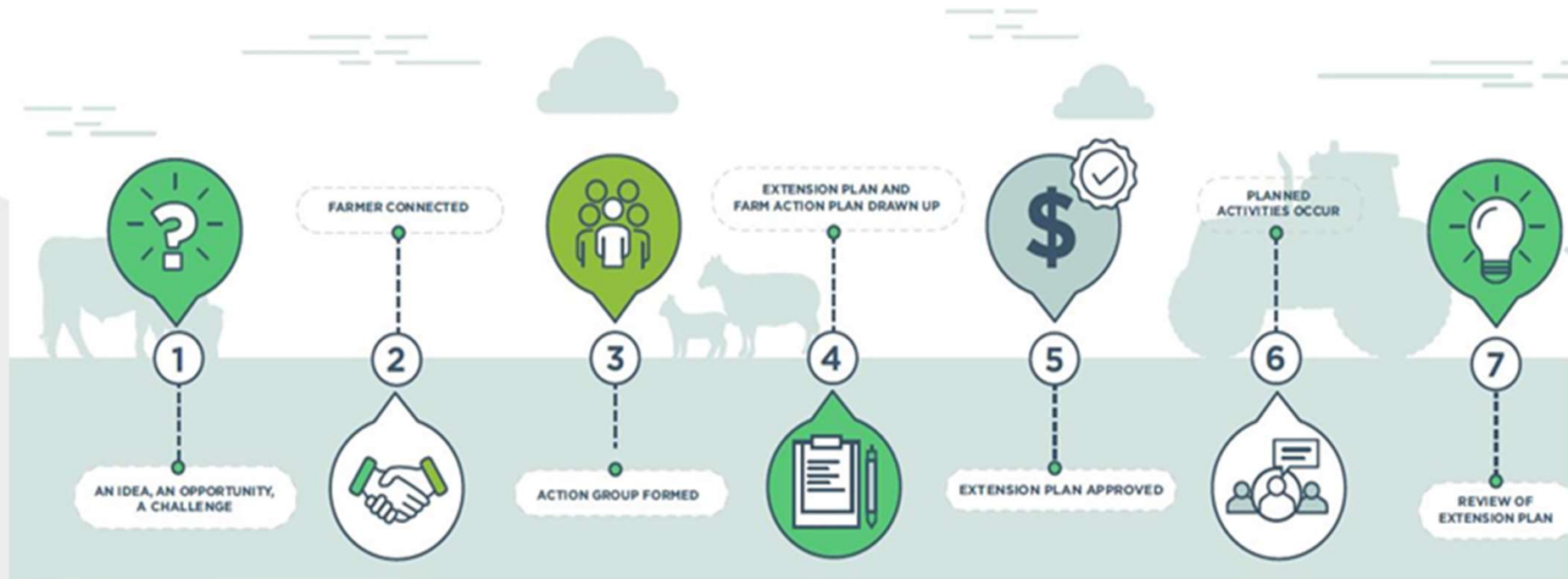
For lead farmers:

Formal contact individually to ensure group and facilitator are performing to expectations

Conference call to address common issues across groups identified through regional intelligence

Manage group membership through the online portal.

Process for Action Groups



How funding works and why?



As talked to groups prior to end of

Some key issues that the groups have identified that they would like help with were:

- Group establishment
- Setting up the group's annual extension plan
- Cementing in place best practice for how the group operates
- Transition from a RMPP funded group to a self-funded group

To help with these issues B+LNZ will make an annual payment of **\$2,000 per group** until 30 September 2023. The funding is subject to completion of a group evaluation survey on the group's ten-month anniversary and an approved extension plan.

Evaluation and Extension Plan renewal



Evaluation

- Survey sent on 10-month anniversary of extension plan

Renewal of Extension Plan

- can take place prior to end of current plan but will not become active until current plan expires
- new Extension Plan must meet criteria
 - Facilitator
 - 7-9 businesses
 - SMART goals
 - On farm change objectives
 - Activity is realistic and achievable
 - Costs are reasonable and realistic

For more information



Connect: with your local B+LNZ Extension Manager

Contact: B+LNZ Action Group Customer Support on
0800 733 632

Email: actiongroupinfo@beeflambnz.com



Any
Questions?



0800 BEEFLAMB (0800 233 352) | WWW.BEEFLAMBNZ.COM | BY FARMERS. FOR FARMERS