

# Stock Number Survey

30 June 2024



 **Total Sheep**  
23.31m head  -4.3%

 **Breeding Ewes**  
14.37m head  -2.9%

 **Hoggets**  
8.14m head  -7.0%

 **Total Beef Cattle**  
3.55m head  -2.8%

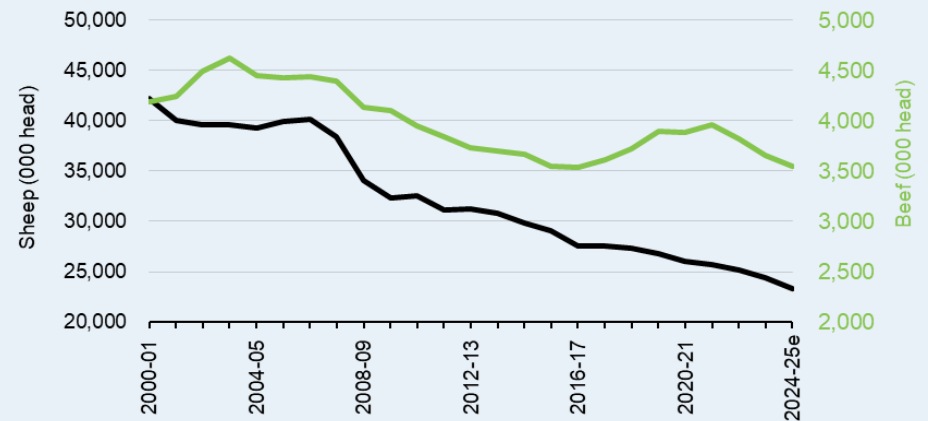
 **Breeding Cows & Heifers**  
0.96m head  -2.7%

Sheep numbers were down more than cattle, as farmers shifted away from sheep due to lower prices and reduced labour requirements as part of continued trend.

Annually in December, the B+LNZ Insights Team release a Lamb Crop Report with revised estimates for spring lambing based on survey results.

Sheep and beef cattle numbers were down at 30 June 2024, following significant decreases in the previous couple of years. In the last few years, the primary driver has been land use change as a result of the conversion of sheep and beef farms into forestry.

This year the primary driver was drought in sheep and beef areas across parts of the country. This has seen farmers needing to destock and has impacted on the outlook for lamb production for the coming season.



Source: Beef + Lamb New Zealand Insights Team | Statistics New Zealand

 **57:35**   
**Sheep:Beef Cattle stock units ratio\***

*\*All classes weighted average estimate for 2024-25. Total stock units on farm includes deer and dairy cattle therefore this ratio does not total 100% of stock units.*